

Business and Enterprise Solutions

DES-132T

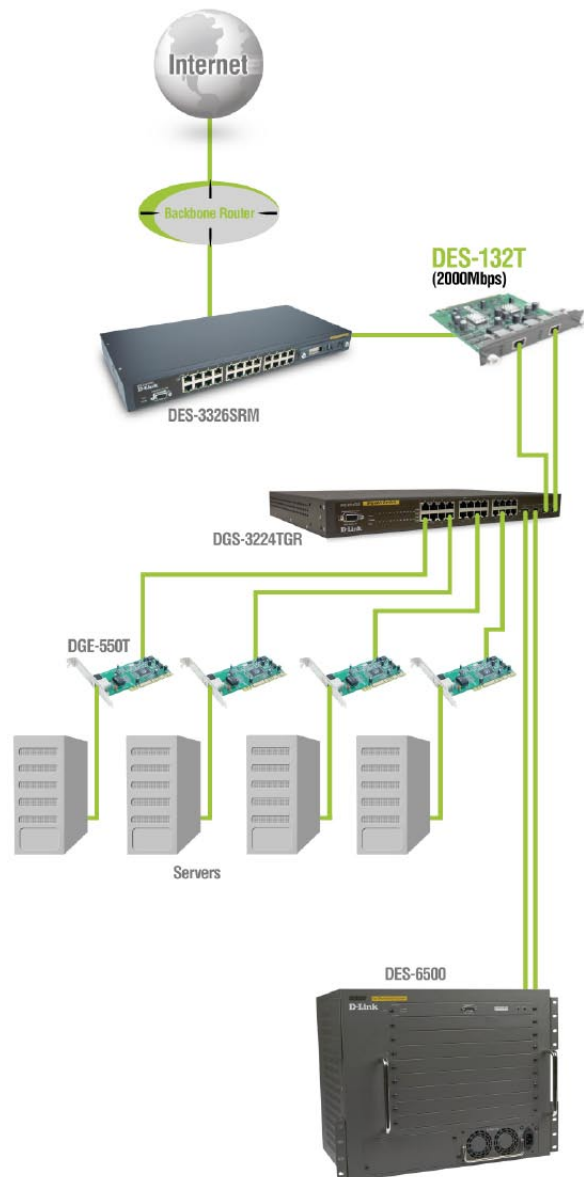


2-Port Gigabit 10/100/1000BASE-T Module

The DES-132T is a two-port Gigabit Ethernet module designed for the DES-3226, DES-3226SM, DES-3326SRM switches. It provides 2 tri-speed Gigabit copper connections to the switches, increasing its port count to 26 ports and providing an increased throughput and connectivity at Gigabit speeds. Designed to alleviate any bottlenecks that might occur in the network, the DES-132T is targeted to be used as uplink ports to servers, or a backbone at a small, medium or large businesses.

The DES-132T is compliant with the IEEE802.3ab 1000BASE-T standard, and supports auto-negotiation and flow control signaling on each individual port. The DES-132T endorses many Layer 2/3/4 functionalities, including SNMP, VLAN ID, Port Mirroring, QoS and Port Trunking. Furthermore, the DES-132T transmits and distributes data frame packets at Layer 2, 3, and 4, incorporating switching and routing technologies.

The DES-132T also includes an informative LED-Light indicator displaying 1000BASE-T mode connections, link build-ups, and packets broadcasts along the network. In addition, the DES-132T detects a MDI crossover connection automatically, eliminating the need for a crossover cable.





DES-132T

Technical Specifications

Product specifications

DES-132T	2-Port 10/100/1000Mbps Module
LEDs	Per unit: Power Per Port: Speed, link/activity

Interface Options

RJ-45	10BASE-T, 100BASE-TX, & 1000BASE-T
-------	------------------------------------

Network Standards

IEEE	802.3 Ethernet, 802.3u, IEEE802.3ab, 802.3x Flow Control
------	--

Physical and Environmental

Temperature	Operating	0 ^o to 50 ^o C (32 ^o to 122 ^o F)
	Storage	-25 ^o to 55 ^o C (-13 ^o – 131 ^o F)
Humidity	Operating	20% to 80%, non-condensing
	Storage	5% to 95%, non-condensing